



Daniel's Pass Trail

(to Mt. Muscoco)



[Click here to view photos of this trail](#)
(Password = havefun)

The **Daniel's Pass Trail** is a seldom used trail with great views. The best vistas are from the summit of Mt. Muscoco. For a solitary, quiet hike, try this trail.

Use of Trail:	Hiking / Biking / Horse Riding Hiking only (using Mt. Cutler Trailhead)
Length of Trail:	2.84 Miles Roundtrip
Elevation Gain:	6,787 Ft. to 7,945 Ft. / 1,158 Ft Gain
Hiking Difficulty:	Moderate (see ratings here)
Fees / Permits:	None
Trail Contact:	Colorado Springs Dept. of Parks & Rec. 1401 Recreation Way Colorado Springs, CO. 80905 (719)385-5940
Approx. Hiking Time:	3 Hours Roundtrip
Terrain Type:	Wooded / Hilly
Trail Characteristics:	Dirt
Views:	Seven Falls / City of Colorado Springs / Cheyenne Mtn.
Pets:	Permitted on Leash Only
Other Nearby Trails:	Mt. Muscoco, Mt. Cutler
Geocaches / Letterboxes:	Yes

GPS Waypoint Files are also available for this trail. This file includes the GPS waypoints for each trail feature listed and can be accessed and downloaded directly to your GPS unit.

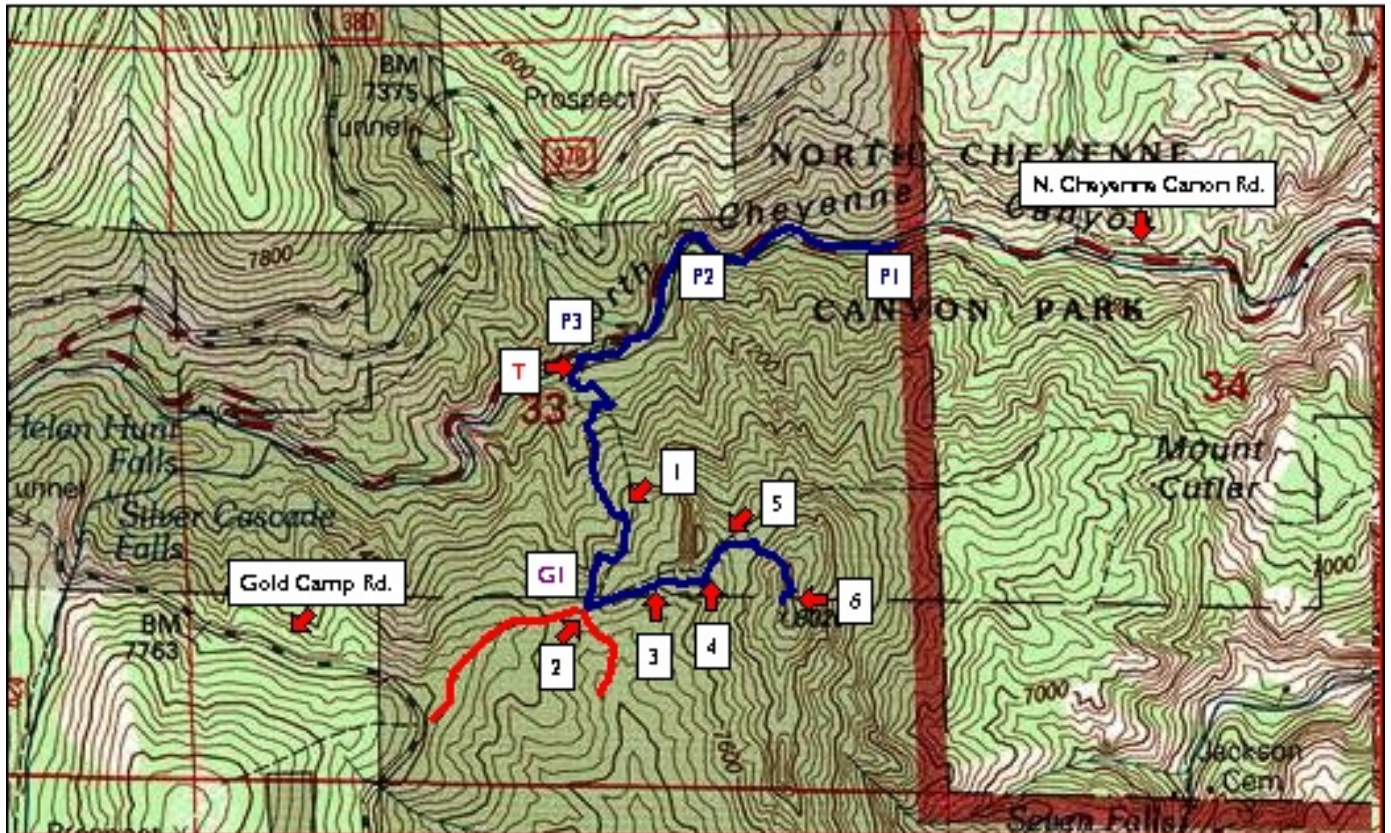
[Click here for the instructions on how to download the GPS waypoint file.](#)

[Click here to download the GPS waypoint file for this trail.](#)

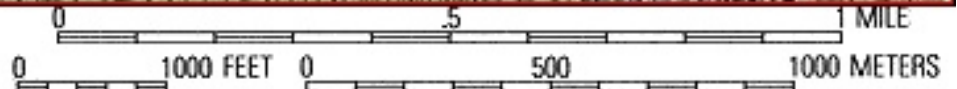


Daniel's Pass Trail
(to Mt. Muscoco)

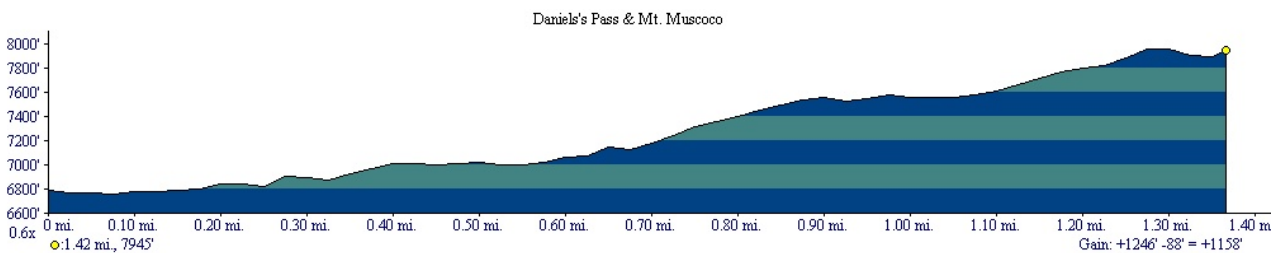
Daniel's Pass Trail



TN/MN
10°



Map created with TOPO!® ©2003 National Geographic (www.nationalgeogr



Profile created with TOPO!® ©2003 National Geographic (www.nationalgeographic.com/topo)

N. Cheyenne Canon / Stratton Open Space Trail Series

Daniel's Pass Trail

Other Trails Accessible from this Trail ([Click on Trail Name Below to Access Trail Guide](#))

- [Mt. Muscoco Trail](#), [Mt. Cutler Trail](#)

Trailhead Directions

From I-25, exit at Nevada Ave. and head south. Travel about 3.5 miles and turn west (right) onto W. Cheyenne Blvd. Proceed 2.75 mi. to the intersection of N. Cheyenne Canon Road & S. Cheyenne Canon Road. The Starsmore Discovery Center is located here. Turn right onto N. Cheyenne Canon Road (past the iron gate) and travel for 1.5 miles to the trailhead on the left side of the road. There is a large "Mt. Cutler Hiking Trail" sign here (see Waypoint Log for alternative parking areas). Be sure to lock your car and do not leave any valuables in plain sight.

[Click here for map to trailhead \(courtesy of MapQuest\)](#)

Waypoint Log

- P1 @ 0.00 Mi.** - Gravel parking area at Mt. Cutler trailhead. The trail begins further west along N. Cheyenne Canon Rd. (on the left or south side of the road).
- P2 @ 0.31 Mi.** - Alternative parking at a small informal parking area (for ~2 cars) along N. Cheyenne Canon Road on the south, or left side of the road.
- T, P3 @ 0.59 Mi.** - Daniel's Pass trailhead is on the left, or south side of N. Cheyenne Canon Road. The trailhead is a little tricky to find. One clue is to find the location of a social trail on the north (right) side of the road, which leads to the Columbine Trail. Directly across the road from this social trail is the trailhead for the Daniel's Pass Trail. An old bridge over N. Cheyenne Creek no longer exists so you should not attempt to cross the creek when the water flows are strong or when the creek is iced over. Be very careful. There is also another small, informal parking area for ~3 cars on the right, or north side of the road, directly across from the trailhead.
- 1 @ 0.88 Mi.** - Small rock outcropping and switchbacks
- 2 @ 1.04 Mi.** - Four-way intersection. Take a left turn for Mt. Muscoco and Daniel's Pass. The trail to the right goes to Gold Camp Rd. and the trail straight ahead leads to Greenwood's Settlement (an early settlement in the area).
- 3 @ 1.11 Mi.** - False summit or hill
- 4 @ 1.22 Mi.** - Saddle of Mt. Muscoco
- 5 @ 1.27 Mi.** - Four-way trail intersection. Daniel's Pass ends here. Turn right for Mt. Muscoco summit. The left trail goes to a rock outcropping and overlook, and the trail straight ahead is the section of the Mt. Muscoco trail which leads back to the Mt. Cutler trailhead. The trail to the summit is not well defined and is fairly steep. Great views on the top.
- 6 @ 1.42 Mi.** - Summit of Mt. Muscoco

Geocaches

- **G1** **Geocache Name:** Four Paws Geocache **Location:** N 38 / 47.093 & W 104 / 53.656

Check out www.geocaching.com for more information